

IC-500211 Impact Bollard

H:360 mm



Impact Control

IC-500211 Impact Bollard

H:360 mm

Impact Control delivers smart protection solutions designed to reduce impact risks - keeping people, equipment, and operations safe in dynamic industrial environments.

TARGETED ASSET PROTECTION

Provides focused protection at critical points - safeguarding machines, loading doors, and equipment from vehicle contact without interrupting workflow.

CONFIGURED FOR REAL OPERATIONS

Available in multiple height configurations to match varying equipment types, traffic conditions, and protection needs.



ALL-ENVIRONMENT DURABILITY

Electro-galvanized steel with high-performance powder coating (RAL 1018), providing long-term resistance to corrosion, UV exposure, chemicals, and demanding industrial conditions - with minimal maintenance.

APPLICATION-DRIVEN SOLUTION

Best suited for environments where rigid, point-specific protection is required - without the need for energy absorption systems.

Impact Control

IC-500211 Product Specification and Use – H: 960/760/560/360 mm



MATERIAL PROPERTIES

MATERIAL:	AISI 1020
YIELD STRENGTH:	3.51571e+08 N/m ²
TENSILE STRENGTH:	4.20507e+08 N/m ²



VOLUMETRIC PROPERTIES referring to Bollards only

MASS:	9.5 kg
-------	--------



COLOR & COATING



BOLLARD & BRACKET

RAL1018. Electro-Galvanized + powder coating. According to ISO9001:2015, certified by SGS.



BASE

Silver (Electro-Galvanized)



RAIL

Grey. Hot dip galvanized steel. Heavy duty structural finish.



DIMENSIONS

Height (H):	360 mm	Guard Rail (Standard):	80×40×2.9mm
Bollard Profile:	80×80×5 mm	Guard Rail (HD):	80×80×2.9mm



TEMPERATURE RATING & INSTALLATION

TEMPERATURE RATING

-40 to +65° C

INSTALLATIONS

On top of solid concrete surfaces only

ELASTOMER MATERIAL

NR (Natural Rubber)
SVR 3L

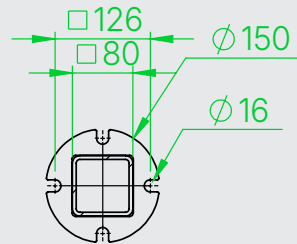
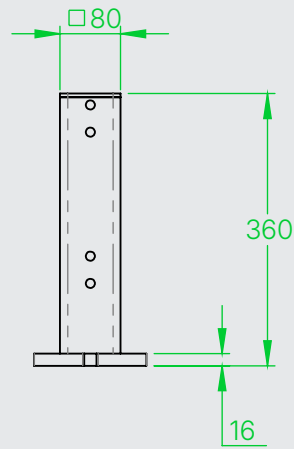
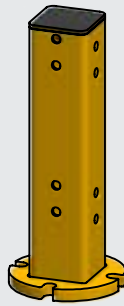
! Anchor screws: 12×70 concrete screws

Impact Control

IC-500211 Product Specification and Use – H: 960/760/560/360 mm



PRODUCT SPECIFICATIONS



SECTION B-B

Impact Control